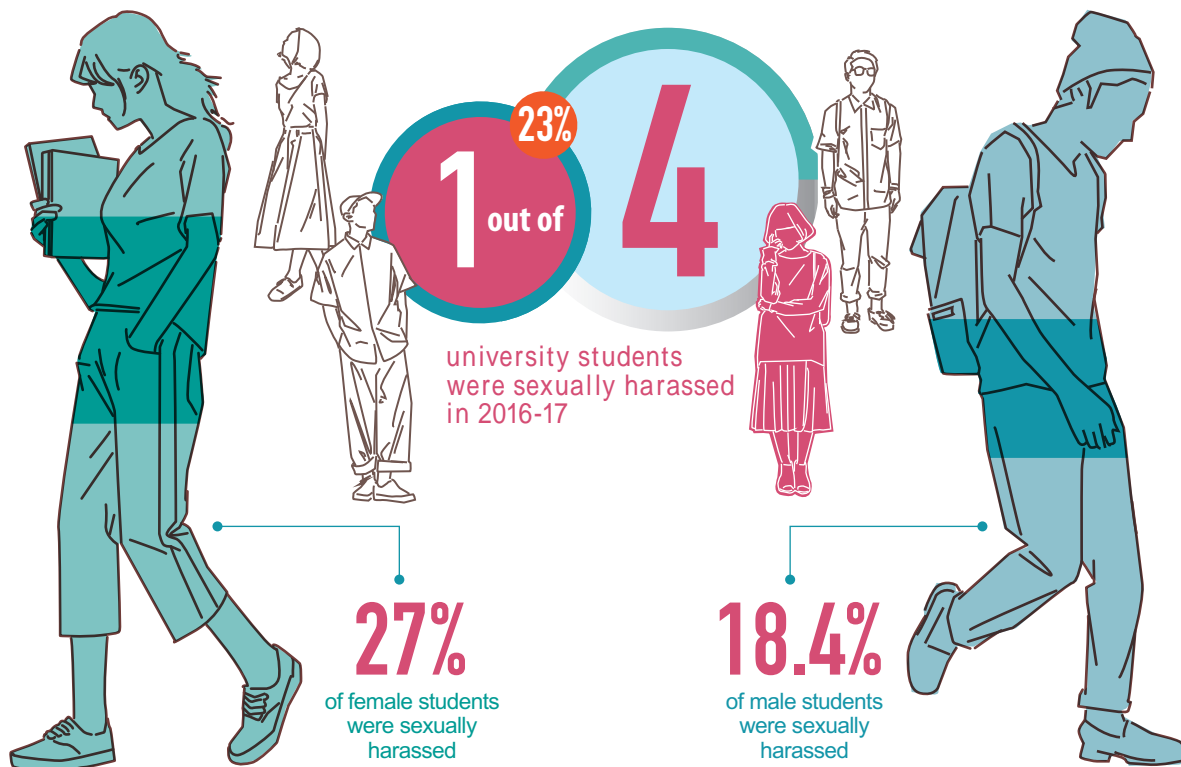
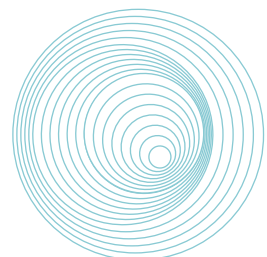
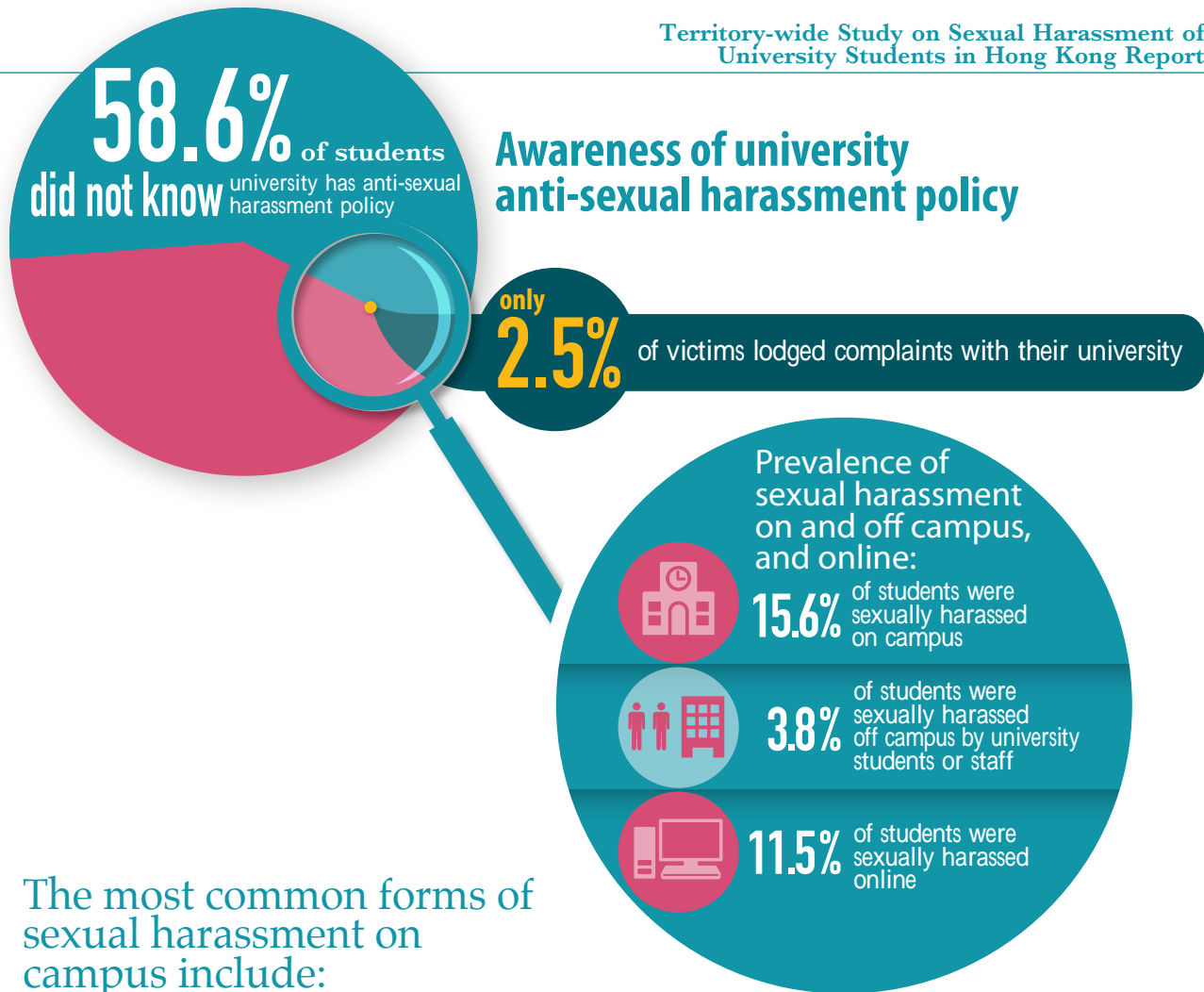


Prevalence of Sexual Harassment



Among students who were sexually harassed :





Making sexually suggestive comments or jokes to third parties in front of the student

▶ **38.0%**

Making sexually suggestive comments or jokes directly to the student

▶ **34.7%**

Inappropriate physical contact with the student, such as forcible kiss or touching

▶ **20.2%**

Someone exposing him/herself in front of the student

▶ **6.6%**

Making sexual advances repeatedly regardless of rejection

▶ **5.1%**

Someone has sexually bullied the student

▶ **2.8%**

Offering good academic results, money or other benefits for sexual favours

▶ **2.8%**

